

Windows CE Driver Installation

Covered models and OS

File name	Model	OS
PrinterUtility_PPC2003_CBM.exe	CMP-10	Pocket PC2003, Windows Mobile 5.0
PrinterUtility_WCE420_CBM.exe	CMP-10	Windows CE.Net 4.2
PrinterUtility_WCE500_CBM.exe	CMP-10	Windows CE5.0
CitizenPrinterDriver_PPC2003_CBM.exe	PD-22/24	Pocket PC2003, Windows Mobile 5.0
CitizenPrinterDriver_WCE420_CBM.exe	PD-22/24	Windows CE.Net 4.2
CitizenPrinterDriver_WCE500_CBM.exe	PD-22/24	Windows CE5.0

Steps to install the driver

Connect PDA and PC via ActiveSync.

Run the appropriate “exe” file on the PC.

The software requires entering the folder path to save the driver CAB files.

Also the software copies and driver files to PDA and driver installation will start automatically.

If you do not have ActiveSync environment, copy the CAB file to the PDA and run the CAB file on the PDA. Then the driver will be installed.

To uninstall the driver, you can choose “Printer Utility” or “Printer Driver” from “Remove Programs” of control panel and press Remove button.

Print Config for CMP-10 (Not included in PD22/24 driver)

Configuration software “Print Config” is installed in the Control Panel together with CMP-10 CE driver. The setting of CMP-10 driver can be done here.

By double-clicking of the icon in Control Panel, “Printer Configuration Utility” starts.

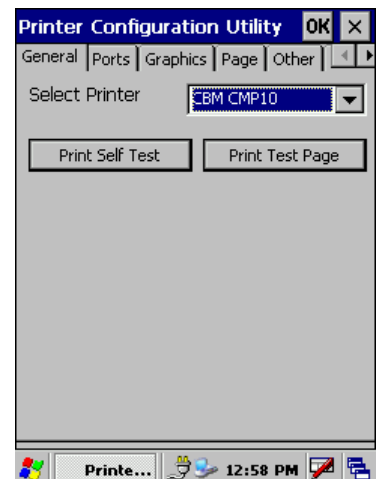
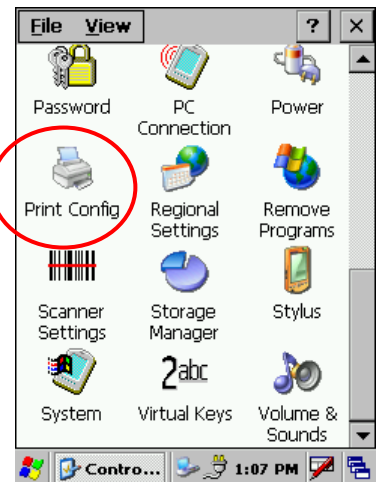
Followings are the explanation of each item for this software.

General Tab

Select Printer : Only CMP-10 can be chosen here.

Print Self Test : If the correct port is chosen and communication condition is OK, this performs the self printing.

Print Test Page: This performs the graphic printing.



Ports Tab

Choose the interface to use from RS232, IrDA, USB or Bluetooth.

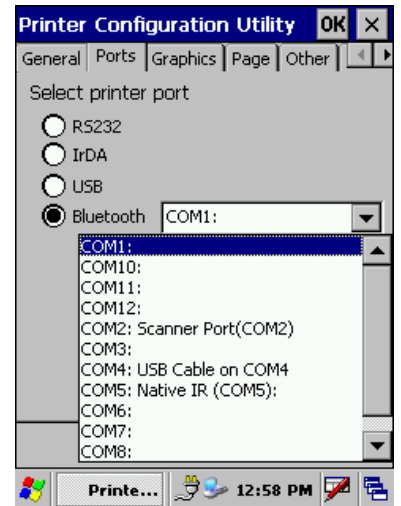
There are further detail setting depending on the interface.

A COM port have to be assigned for the interface other than IrDA.

Graphics Tab

Dithering : This is a method of image printing only by the limited graphic capabilities. If you do not use this, choose “None”.

Brightness, Contrast, Density : Usually, it is not necessary to adjust these items but if you see strange pattern on the black area, it may be improved by adjusting these settings.



Page Tab

Increase page height: If you want to expand the paper size, please use this function.

Normally, the paper size means just a position to have paper feed for changing pages.

Cut White Space at the end: To avoid wasting paper, please check this item normally.

Paper feed after document: Set the paper feed length at the end of printing. Normally it is not necessary to change this setting.

Other Tab

Print Logo: If you want to print graphic data loaded to main memory automatically, please use this function.

None – does not print

Before Doc – print logo at the top of the document

After Doc – print logo at the bottom of the document.

Show progress dialog : Choose this items when you want to show progress bar.

Printing from application software through the CE driver.

Prior to the printing, necessary setting change for the driver should be done.

It is not so different from printing from standard Windows.

For example, if we use WordPad, we can choose "Print" from menu.

It brings "Print" screen and you can change the detail setting there.

And you can press OK to start printing.

Caution: Printing is done in graphic and printing in device font cannot be done in this case.

The items in this "Print" menu are as follows..

Printer: The installed driver can be chosen from here.

Port: Choose the port to send the data. IrDA, COMx, etc can be chosen.

For the Bluetooth, you can choose BT(CMP-10) or COMx(PD22/24)

Paper Size: Paper size is only for the position to change to new page. Extra paper feed is added to change to the new page.

Margins: The default value may be too big. It is recommended to set smaller value such as "0".

Print Range: You can choose the area to print either all or selected area.

Orientation: You can choose the direction of printing either from Portrait or Landscape.

Usually, Portrait is used.

Implementing printing function of driver in the application software

Standard printing method of Windows application software can be used. Sample programs for several development environments are available. Some function other than printing are also supported for CMP-10.

